

THIS DRAWING IS UNPUBLISHED. RELEASED FOR PUBLICATION
 (C) COPYRIGHT 19 BY AMP INCORPORATED. ALL RIGHTS RESERVED.

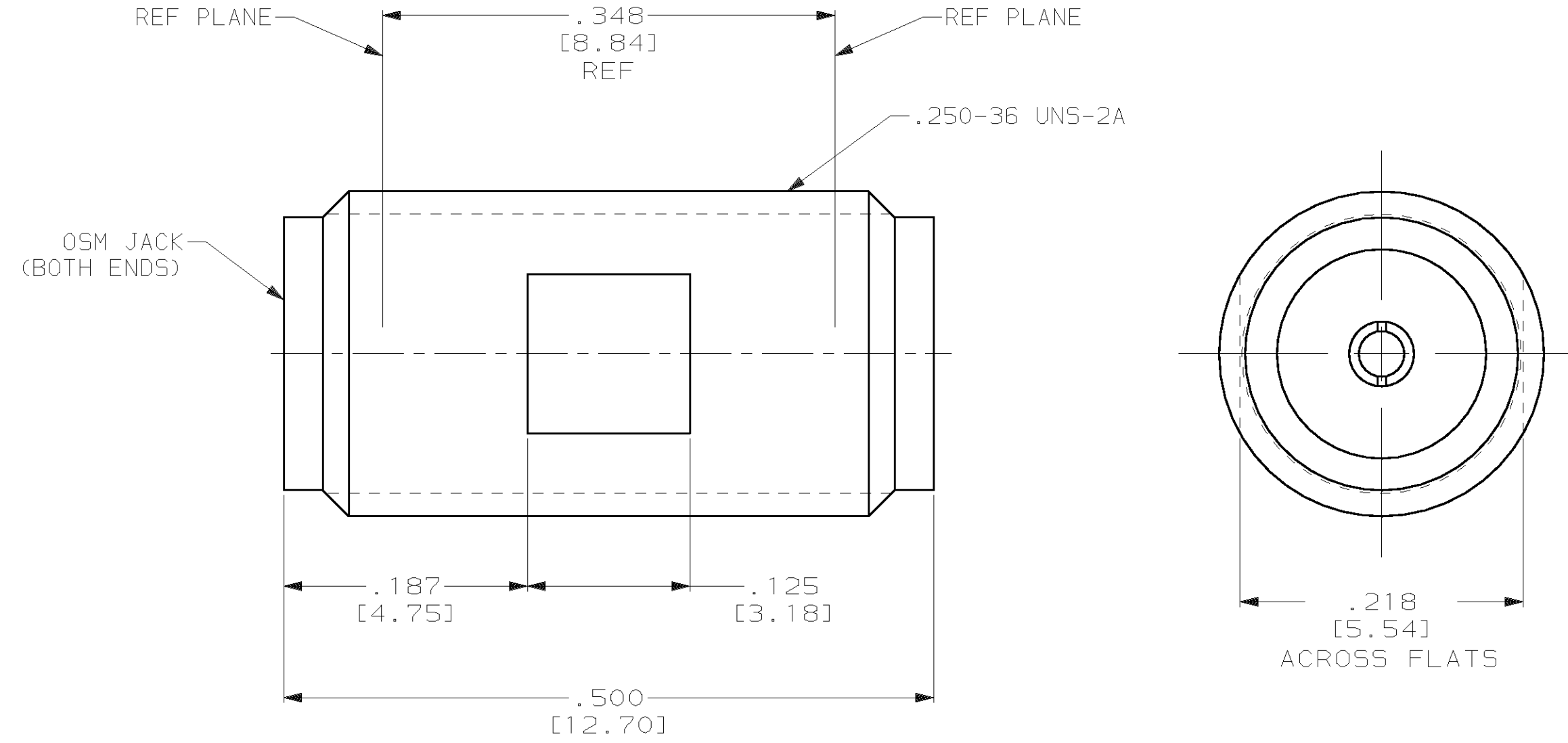
LOC	DIST	REVISIONS					
DF	XO	P	LTR	DESCRIPTION	DATE	DWN	APVD
		0		RELEASED	10-01	CT	RG

COMPONENT	MATERIAL	FINISH
HOUSING	STAINLESS STEEL PER ASTM-A-484 OR ASTM-A-582 TYPE 303	GOLD PLATED PER ASTM-B-488
DIELECTRIC	PTFE FLUORCARBON PER ASTM-D-1457	-
CENTER CONTACT	BERYLLIUM COPPER PER ASTM-B-196 OR ASTM-B-197 ALLOY C17300, CONDITION H	GOLD PLATED PER ASTM-B-488

ENVIRONMENTAL
TEMPERATURE RATING: -65°C TO +165°C
VIBRATION: MIL-STD-202, METHOD 204, CONDITION D
SHOCK: MIL-STD-202, METHOD 213, CONDITION 1
MOISTURE RESISTANCE: MIL-STD-202, METHOD 106 (NO VIBRATION)
CORROSION: MIL-STD-202, METHOD 101, CONDITION B. 5% SALT SPRAY
THERMAL SHOCK: MIL-STD-202, METHOD 107, CONDITION C

MECHANICAL
INTERFACE DIMENSIONS: MIL-STD-348A FIG. 310.2
RECOMMENDED MATING TORQUE: N/A
FORCE TO ENGAGE & DISENGAGE (IN-LBS MAX.): 2.0
WEIGHT (GRAMS): 2.0
MATING CHARACTERISTICS: INSERTION (MAX LBS): 3.0 WITHDRAWAL (MIN OZ): 1.0
CABLE RETENTION: AXIAL FORCE (LBS): N/A TORQUE (IN-OZ): N/A
CENTER CONTACT CAPTIVATION: AXIAL (LBS): 10.0 RADIAL (IN-OZ): N/A

ELECTRICAL
NORMAL IMPEDANCE (OHMS): 50
FREQUENCY RANGE (GHz): DC TO 18
VOLT RATING @ SEA LEVEL (VRMS MAX): 335
VSWR: 1.05+ .005 F (GHz)
INSERTION LOSS: (dB MAX): .06 √ F (GHz)
RF LEAKAGE (dB MIN): -[90-F (GHz)]
CORONA 70,000 FT (VRMS MIN): 250
DIELECTRIC WITHSTANDING VOLTAGE (VRMS MIN) AT SEA LEVEL: 1500
I.R. (MEGOHMS MIN): 10.000
RF HIGH POTENTIAL AT SEA LEVEL (VRMS MIN @ 5 MHz): 670
CONTACT RESISTANCE (MILLIOHMS MAX): CENTER CONTACT: 4.0 OUTER CONTACT: 2.0 CABLE TO HOUSING: N/A



1484340-1
PART NO.

THIS DRAWING IS A CONTROLLED DOCUMENT.		DWN C.C. THOMAS 10-11-01	TYCO Electronics Corporation Harrisburg, PA 17105-3608
DIMENSIONS: INCHES [mm]		CHK R. GROSS 10-11-01	
		APVD R. GROSS 10-11-01	NAME
TOLERANCES UNLESS OTHERWISE SPECIFIED: 0 PLC ±- 1 PLC ±- 2 PLC ±- 3 PLC ±.005 [0.13] 4 PLC ±- ANGLES ±-		PRODUCT SPEC	OSM JACK TO JACK ADAPTER
MATERIAL SEE TABLE		APPLICATION SPEC	SIZE A2
FINISH SEE TABLE		WEIGHT -	CAGE CODE 00779
		CUSTOMER DRAWING	DRAWING NO 1484340
		SCALE 10:1	RESTRICTED TO -
		SHEET 1 OF 1	REV 0